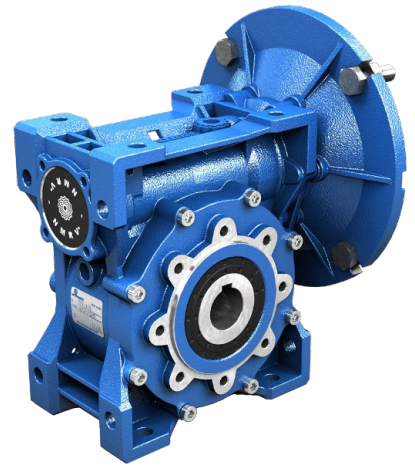


PRODUCT DATASHEET

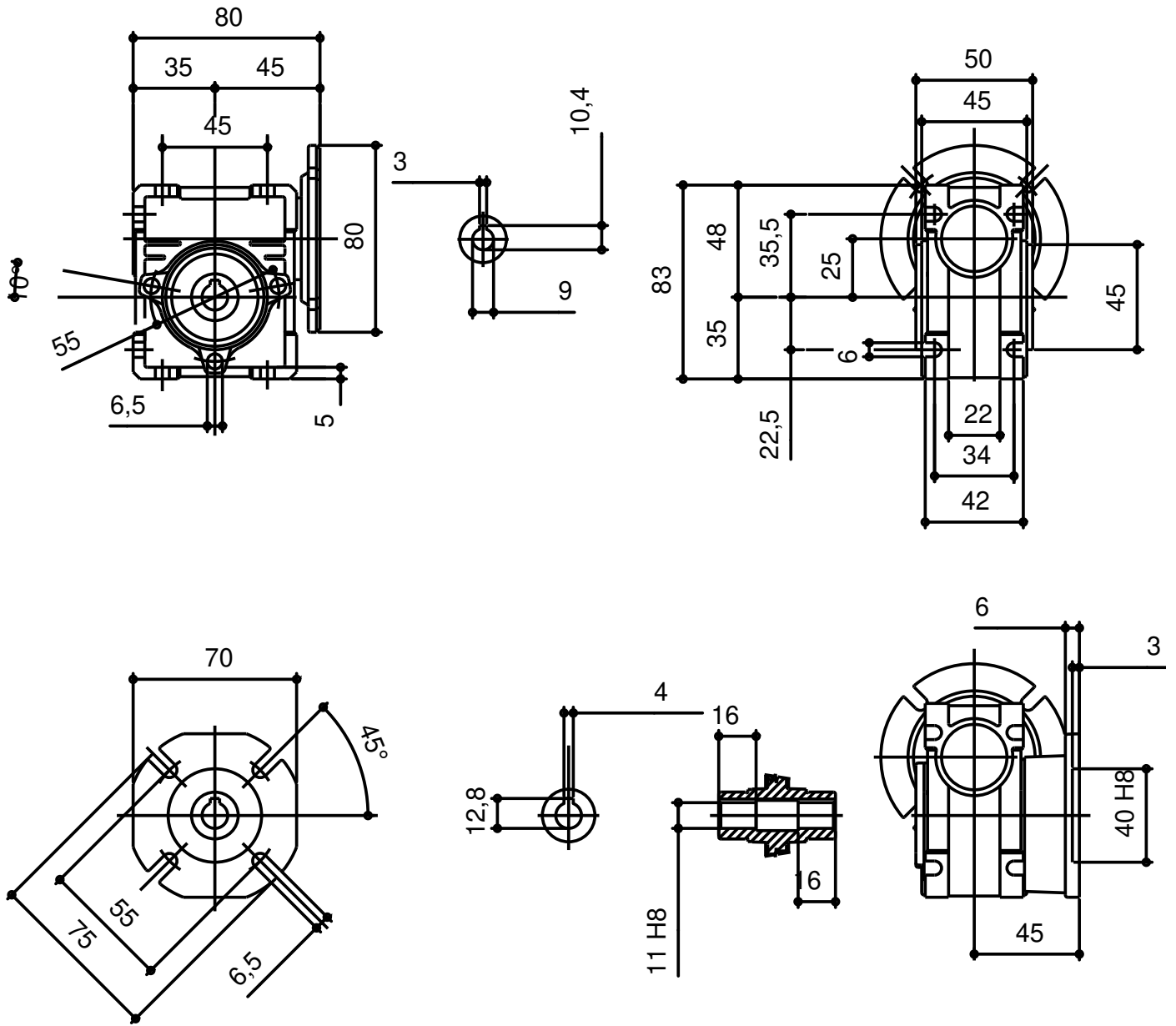


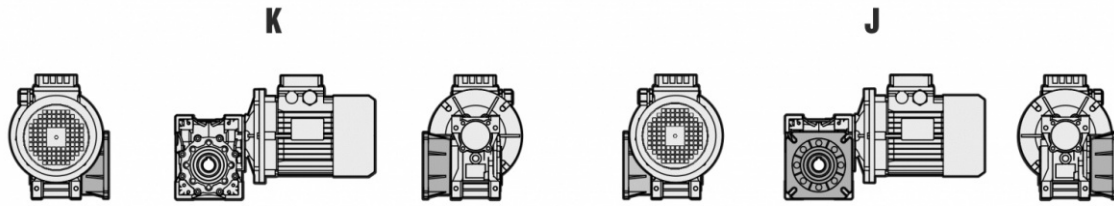
WORMGEARREDUCER

DATE 27.05.2026

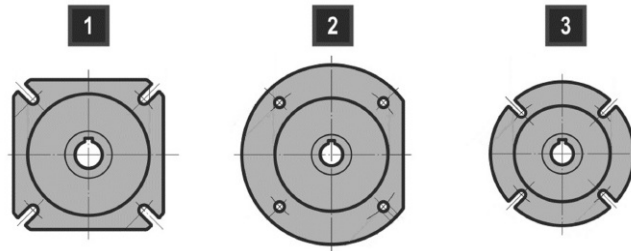
CHARACTERISTIC	VALUE
Regulations	No
Worm	PAM NMRV
Size	025
Ratio (i)	50,0
Input Dim.	Ø80x9 (IEC56 B14)
Hollow Output Shaft Dim.	Ø11
Double-Extended Worm Shaft	No
Mounting Position	U
VI-Output Oil Seal	NBR-Nitrile
VI-Input Oil Seal	ACM-Polyacrylate
VI-Output Bearings	Ball Bearings
VI-Lubrication	Synthetic ISO VG320
Paint	Not Painted

Values expressed in [mm]





Unless specified otherwise, the reduction unit is supplied with the flange in pos. J referred to position B3.



	NMRV - SW	NMRV - SW	NMRV - SW	NMRV-P - SW	NMRV-P - SW	NMRV-P - SW	SW	NMRV-P	NMRV	NMRV
	030	040	050	063	075	090	105	110	130	150
FA	1	1	1	1	1	1	1	1	1	1
FB	-	1	1	1	3	2	1	1	-	-
FC	-	2	2	2	-	3	-	-	-	-
FD	-	2	2	2	-	1	-	-	-	-
FE	-	-	-	3	-	-	-	-	-	-

The values reported in the tables are referred to the weight of the gearbox with lubricant included.
Weight without motor.

NMRV - NMRV-P (- kg)									
025	030	040	050	063	075	090	110	130	150
0,7	1,2	2,3	3,5	6,2	9	13	21	43,5	84

NRV - NRV-P (- kg)									
030	040	050	063	075	090	110	130	150	
1	2	3,3	5,8	8,8	13	21	43,5	77	

	HA31+NMRV040 (- kg)	HA31+NMRV050 (- kg)
063	4,2	5,4
071	4,3	5,5
080	4,5	5,7

056/063/071/080				063/071/080/090			
NMRV-P063/HW030 (- kg)		NMRV-P075/HW030 (- kg)		NMRV-P090/HW040 (- kg)		NMRV-P110/HW040 (- kg)	
7,1		10		14,6		24,4	

NMRV-P090/IHW040 (- kg)	NMRV-P110/IHW040 (- kg)
14,6	38,4

NMRV+NMRV - NMRV+NMRV-P - NMRV-P+NMRV - NMRV-P+NMRV-P (- kg)													
025-030	025-040	030-040	030-050	030-063	040-050	040-063	040-075	040-090	050-090	050-110	063-110	063-130	063-150
1,9	3	3,5	4,7	7,4	5,8	8,5	11,3	15,3	16,5	38,5	41,2	54,2	90,2

NRV+NMRV - NRV+NMRV-P - NRV-P+NMRV - NRV-P+NMRV-P (- kg)												
030-040	030-050	030-063	040-050	040-063	040-075	040-090	050-090	050-110	063-110	063-130	063-150	
3,5	4,7	7,4	5,8	8,5	11,3	15,3	16,5	38,5	41,2	54,2	90,2	

The values reported in the tables are referred to the weight of the gearbox with lubricant included.
Weight without motor.

SW (- kg)						
030	040	050	063	075	090	105
1,2	2,3	3,5	6,2	9	13	21

ISW (- kg)						
030	040	050	063	075	090	105
1	2	3,3	5,8	8,8	13	21

	HA31+SW040 (- kg)	HA31+SW050 (- kg)	HA31+SW063 (- kg)	HA31+SW075 (- kg)	HA31+SW090 (- kg)
063	4,2	5,4	8,1	10,9	14,9
071	4,3	5,5	8,2	11,0	15,0
080	4,5	5,7	8,4	11,2	15,2

SW+SW (- kg)					
030-040	030-050	030-063	040-075	040-090	050-105
3,5	4,7	7,4	11,3	15,3	38,5

ISW+SW (- kg)					
030-040	030-050	030-063	040-075	040-090	050-105
3,5	4,7	7,4	11,3	15,3	38,5

ISW030

n_1 [rpm]	Mn_2 [Nm]	i	Pn_1 [kW]	n_2 [rpm]	Fr_1 [N]	Fr_2 [N]
500	22	50,00	0,05	10,0	210	1813
900	19	50,00	0,07	18,0	210	1490
1140	19	50,00	0,08	23,0	210	1377
1400	18	50,00	0,09	28,0	210	1286
1750	17	50,00	0,11	35,0	210	1194
2800	13	50,00	0,12	56,0	128	1021

ISW040

n_1 [rpm]	Mn_2 [Nm]	i	Pn_1 [kW]	n_2 [rpm]	Fr_1 [N]	Fr_2 [N]
500	53	50,00	0,10	10,0	350	3488
900	46	50,00	0,15	18,0	350	2868
1140	44	50,00	0,17	23,0	350	2650
1400	42	50,00	0,20	28,0	350	2475
1750	40	50,00	0,23	35,0	350	2298
2800	30	50,00	0,25	56,0	350	1964

ISW050

n_1 [rpm]	Mn_2 [Nm]	i	Pn_1 [kW]	n_2 [rpm]	Fr_1 [N]	Fr_2 [N]
500	96	50,00	0,18	10,0	490	4788
900	81	50,00	0,25	18,0	490	3936
1140	79	50,00	0,30	23,0	490	3638
1400	77	50,00	0,35	28,0	490	3397
1750	73	50,00	0,42	35,0	490	3153
2800	53	50,00	0,44	56,0	490	2696

ISW063

n_1 [rpm]	Mn_2 [Nm]	i	Pn_1 [kW]	n_2 [rpm]	Fr_1 [N]	Fr_2 [N]
500	195	50,00	0,36	10,0	700	6259
900	161	50,00	0,49	18,0	700	5145
1140	152	50,00	0,56	23,0	700	4755
1400	143	50,00	0,63	28,0	700	4440
1750	136	50,00	0,73	35,0	700	4122
2800	105	50,00	0,85	56,0	700	3524

ISW075

n_1 [rpm]	Mn_2 [Nm]	i	Pn_1 [kW]	n_2 [rpm]	Fr_1 [N]	Fr_2 [N]
500	314	50,00	0,55	10,0	980	7380
900	255	50,00	0,75	18,0	980	6073
1140	240	50,00	0,86	23,0	980	5613
1400	225	50,00	0,94	28,0	980	5241
1750	212	50,00	1,10	35,0	980	4865
2800	165	50,00	1,29	56,0	980	4160

ISW090

n_1 [rpm]	Mn_2 [Nm]	i	Pn_1 [kW]	n_2 [rpm]	Fr_1 [N]	Fr_2 [N]
500	495	50,00	0,81	10,0	1270	8174
900	429	50,00	1,17	18,0	1270	6719
1140	402	50,00	1,34	23,0	1270	6210
1400	374	50,00	1,50	28,0	1270	5799
1750	355	50,00	1,76	35,0	1270	5383
2800	265	50,00	2,02	56,0	1270	4603

ISW105

n_1 [rpm]	Mn_2 [Nm]	i	Pn_1 [kW]	n_2 [rpm]	Fr_1 [N]	Fr_2 [N]
500	860	50,00	1,34	10,0	1270	10320
900	665	50,00	1,74	18,0	1270	8491
1140	625	50,00	2,01	23,0	1270	7847
1400	587	50,00	2,26	28,0	1270	7328
1750	558	50,00	2,66	35,0	1270	6803
2800	409	50,00	3,00	56,0	1270	5816

NRV030

n_1 [rpm]	Mn_2 [Nm]	i	Pn_1 [kW]	n_2 [rpm]	Fr_1 [N]	Fr_2 [N]
500	22	50,00	0,05	10,0	210	1813
900	19	50,00	0,07	18,0	210	1490
1140	19	50,00	0,08	23,0	210	1377
1400	18	50,00	0,09	28,0	210	1286
1750	17	50,00	0,11	35,0	210	1194
2800	13	50,00	0,12	56,0	128	1021

NRV040

n_1 [rpm]	Mn_2 [Nm]	i	Pn_1 [kW]	n_2 [rpm]	Fr_1 [N]	Fr_2 [N]
500	53	50,00	0,10	10,0	350	3488
900	46	50,00	0,15	18,0	350	2868
1140	44	50,00	0,17	23,0	350	2650
1400	42	50,00	0,20	28,0	350	2475
1750	40	50,00	0,23	35,0	350	2298
2800	30	50,00	0,25	56,0	350	1964

NRV050

n_1 [rpm]	Mn_2 [Nm]	i	Pn_1 [kW]	n_2 [rpm]	Fr_1 [N]	Fr_2 [N]
500	96	50,00	0,18	10,0	490	4788
900	81	50,00	0,25	18,0	490	3936
1140	79	50,00	0,30	23,0	490	3638
1400	77	50,00	0,35	28,0	490	3397
1750	73	50,00	0,42	35,0	490	3153
2800	53	50,00	0,44	56,0	490	2696

NRV-P063

n_1 [rpm]	Mn_2 [Nm]	i	Pn_1 [kW]	n_2 [rpm]	Fr_1 [N]	Fr_2 [N]
500	195	50,00	0,36	10,0	700	6259
900	161	50,00	0,49	18,0	700	5145
1140	152	50,00	0,56	23,0	700	4755
1400	143	50,00	0,63	28,0	700	4440
1750	136	50,00	0,73	35,0	700	4122
2800	105	50,00	0,85	56,0	700	3524

NRV-P075

n_1 [rpm]	Mn_2 [Nm]	i	Pn_1 [kW]	n_2 [rpm]	Fr_1 [N]	Fr_2 [N]
500	314	50,00	0,55	10,0	980	7380
900	255	50,00	0,75	18,0	980	6073
1140	240	50,00	0,86	23,0	980	5613
1400	225	50,00	0,94	28,0	980	5241
1750	212	50,00	1,10	35,0	980	4865
2800	165	50,00	1,29	56,0	980	4160

NRV-P090

n_1 [rpm]	Mn_2 [Nm]	i	Pn_1 [kW]	n_2 [rpm]	Fr_1 [N]	Fr_2 [N]
500	495	50,00	0,81	10,0	1270	8174
900	429	50,00	1,17	18,0	1270	6719
1140	402	50,00	1,34	23,0	1270	6210
1400	374	50,00	1,50	28,0	1270	5799
1750	355	50,00	1,76	35,0	1270	5383
2800	265	50,00	2,02	56,0	1270	4603

NRV-P110

n_1 [rpm]	Mn_2 [Nm]	i	Pn_1 [kW]	n_2 [rpm]	Fr_1 [N]	Fr_2 [N]
500	880	50,00	1,38	10,0	1700	10320
900	748	50,00	1,96	18,0	1700	8491
1140	704	50,00	2,26	23,0	1700	7847
1400	660	50,00	2,55	28,0	1700	7328
1750	627	50,00	2,99	35,0	1700	6803
2800	495	50,00	3,63	56,0	1700	5816

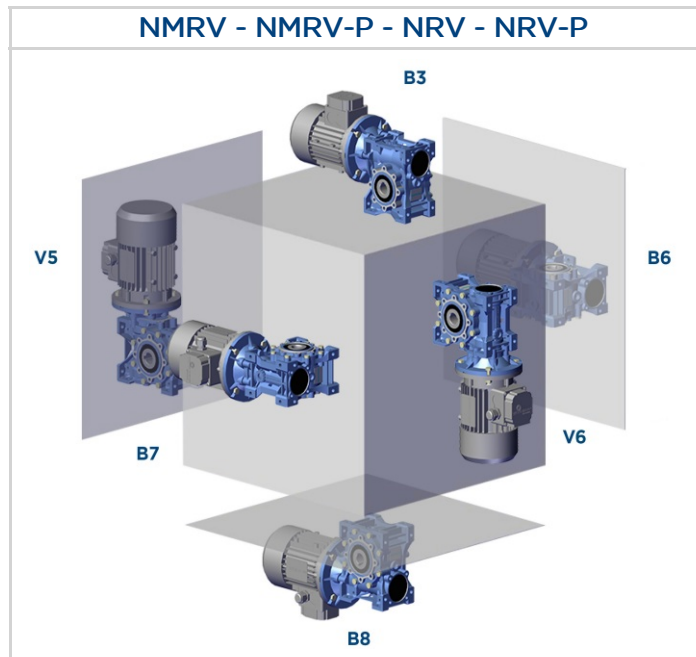
NRV130

n_1 [rpm]	Mn_2 [Nm]	i	Pn_1 [kW]	n_2 [rpm]	Fr_1 [N]	Fr_2 [N]
500	1220	50,00	1,88	10,0	2100	13500
900	1050	50,00	2,71	18,0	2100	11105
1140	1015	50,00	3,32	23,0	2100	10264
1400	980	50,00	3,78	28,0	2100	9584
1750	931	50,00	4,49	35,0	2100	8897
2800	700	50,00	5,07	56,0	2100	7607

NRV150

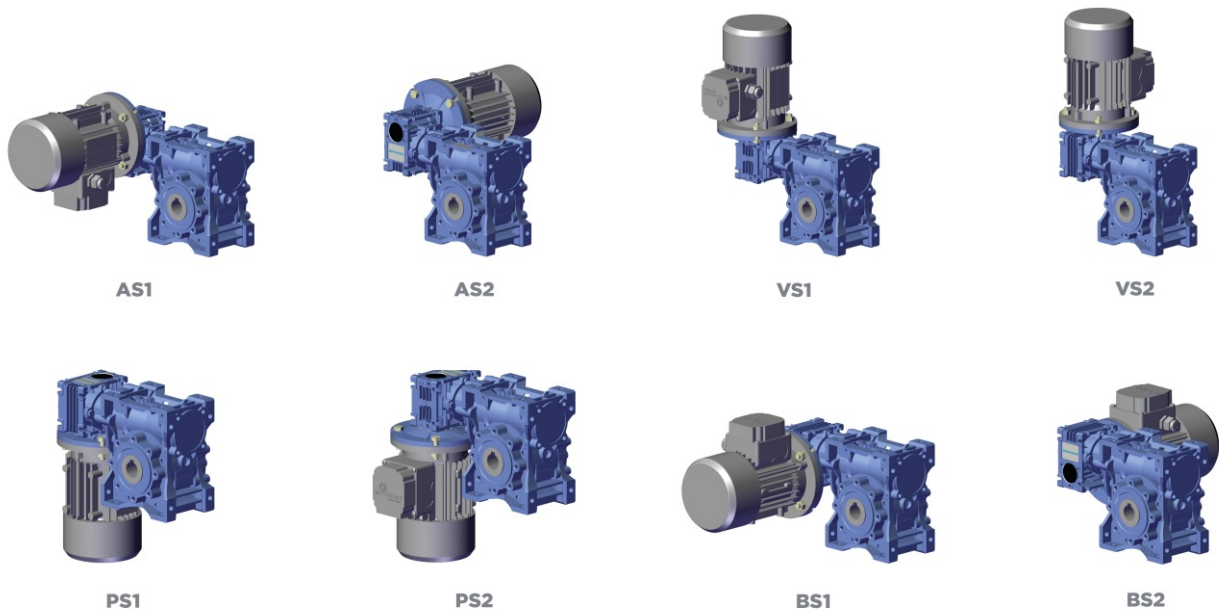
n_1 [rpm]	Mn_2 [Nm]	i	Pn_1 [kW]	n_2 [rpm]	Fr_1 [N]	Fr_2 [N]
500	1870	50,00	2,84	10,0	2800	18000
900	1600	50,00	4,08	18,0	2800	15182
1140	1600	50,00	5,16	23,0	2800	14031
1400	1400	50,00	5,33	28,0	2800	13103
1750	1330	50,00	6,33	35,0	2800	12163
2800	1100	50,00	7,96	56,0	2800	10400

The mounting position of the gear unit identifies its space orientation. B3 mounting position, as from a technical point of view, ensures lower oil splash, better lubrication and less heating.



Execution

NMRV/NMRV-P+NMRV/NMRV-P - NRV/NRV-P+NMRV/NMRV-P



LUBRICANT

- The gear reducers size 025 - 030 - 040 - 050 - 063 - 075 - 090 - 105 - 110 - 130 - 150 are supplied complete with lubricant for life, synthetic oil, LAND OIL GEAR SINT. They can be mounted in any position envisaged in the catalogue, except for NMRV-P/SW 090 - 110 and NRV-P/ISW 075-090-110 for which you must to specify the mounting position.
- For sizes 130 and 150 it is necessary to specify the position, otherwise the gear reducers are supplied with the quantity of oil relating to pos. B3.
- Only reduction units 130 and 150 are fitted with breather, level and oil drainage plugs.
- The pre-stage helical modules are supplied complete with life-long lubricant, synthetic oil, LAND OIL GEAR SINT. Lubrication is separated from that of the worm gear reducers.

It is recommended, after installation, to replace the closed plug used for transportation with the supplied breather plug.

Quantity of oil in litres ~

NMRV	025	030	040	050	130	150
B3	0,02	0,04	0,08	0,15	4,5	7
B8					3,3	5,1
B6-B7					3,5	5,4
V5					4,5	7
V6					3,3	5,1

NMRV-P	063	075	090	110
B3	0,33	0,55	1,15	1,6
B8				
B6-B7				
V5				
V6				

SW	030	040	050	063	075	090	105
B3	0,04	0,08	0,15	0,3	0,55	1	1,6
B8							
B6-B7							
V5							
V6							

HW	HW030		HW040	
	NMRV-P063	NMRV-P075	NMRV-P090	NMRV-P110
B3-B6-B7-B8-V5-V6	0,06	0,09	0,11	0,12

H	A31
B3-B5	0,07

LUBRICANT

PRODUCT DATASHEET

NMRV	063	075	090	105	110
B3	0,3	0,55	1	1,6	3
B8					2,2
B6-B7					2,5
V5					3
V6					2,2

DIRECTION OF ROTATION

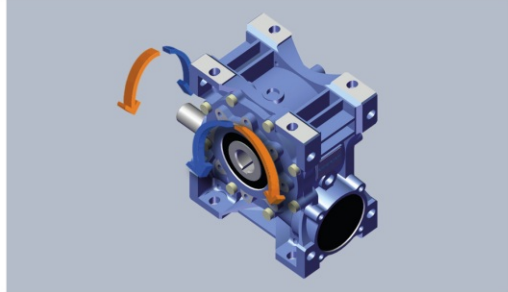
The worm screw rotation is right-handed.

DIRECTION OF ROTATION - HIGH SPEED SHAFT

NMRV - NRV - SW - ISW

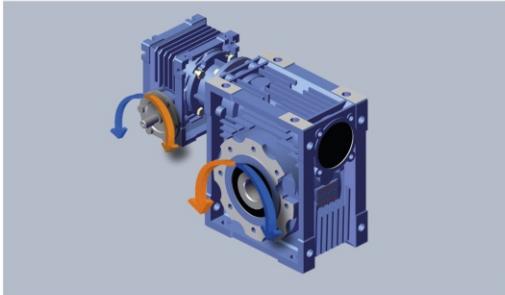


MOUNTING POSITION **B3**

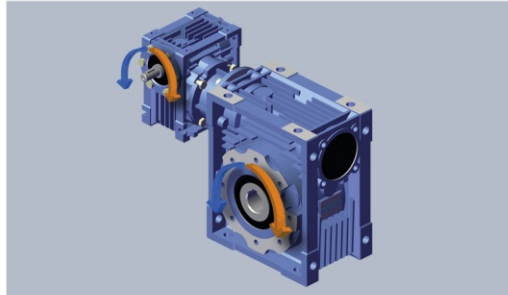


MOUNTING POSITION **B8**

NMRV + NMRV - SW + SW - NRV + NMRV - ISW + SW



MOUNTING POSITION **BS1**



MOUNTING POSITION **AS1**