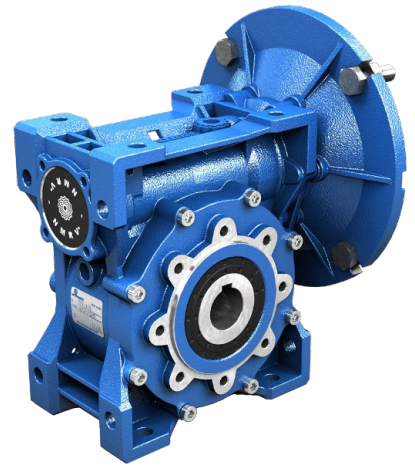


PRODUCT DATASHEET

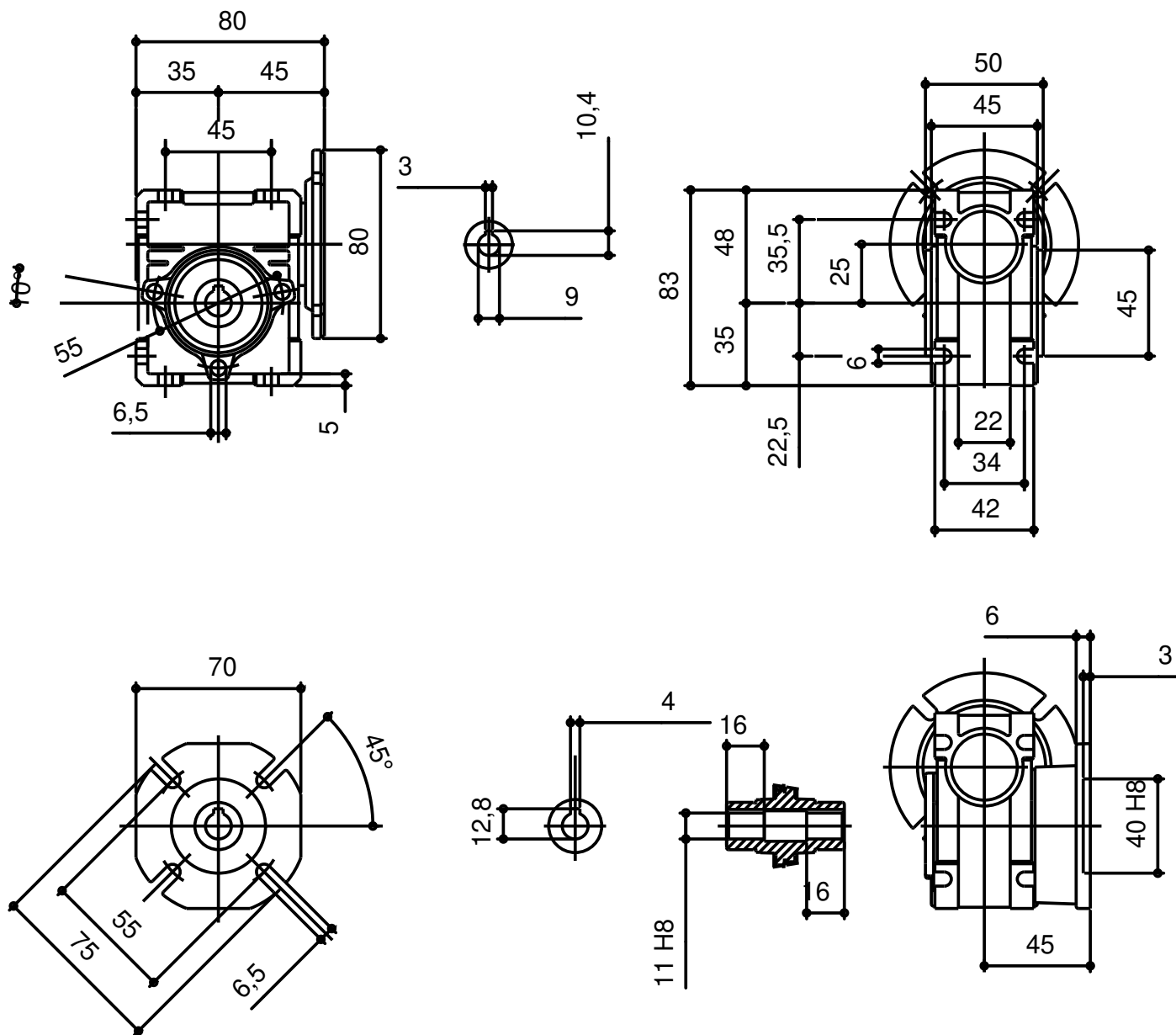


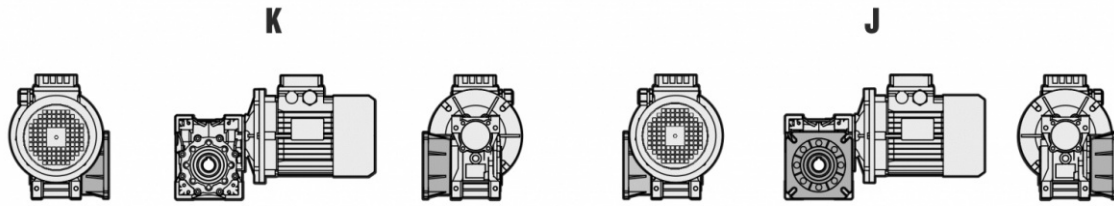
WORMGEARREDUCER

DATE 27.05.2026

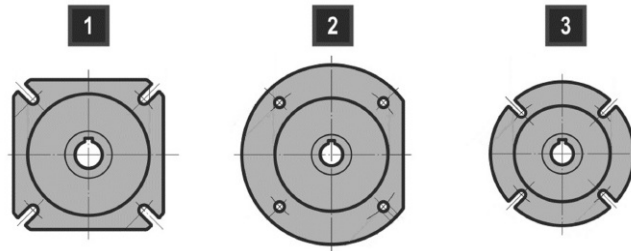
CHARACTERISTIC	VALUE
Regulations	No
Worm	PAM NMRV
Size	025
Ratio (i)	40,0
Input Dim.	Ø80x9 (IEC56 B14)
Hollow Output Shaft Dim.	Ø11
Double-Extended Worm Shaft	No
Mounting Position	U
VI-Output Oil Seal	NBR-Nitrile
VI-Input Oil Seal	ACM-Polyacrylate
VI-Output Bearings	Ball Bearings
VI-Lubrication	Synthetic ISO VG320
Paint	Not Painted

Values expressed in [mm]





Unless specified otherwise, the reduction unit is supplied with the flange in pos. J referred to position B3.



	NMRV - SW	NMRV - SW	NMRV - SW	NMRV-P - SW	NMRV-P - SW	NMRV-P - SW	SW	NMRV-P	NMRV	NMRV
	030	040	050	063	075	090	105	110	130	150
FA	1	1	1	1	1	1	1	1	1	1
FB	-	1	1	1	3	2	1	1	-	-
FC	-	2	2	2	-	3	-	-	-	-
FD	-	2	2	2	-	1	-	-	-	-
FE	-	-	-	3	-	-	-	-	-	-

The values reported in the tables are referred to the weight of the gearbox with lubricant included.
Weight without motor.

NMRV - NMRV-P (- kg)									
025	030	040	050	063	075	090	110	130	150
0,7	1,2	2,3	3,5	6,2	9	13	21	43,5	84

NRV - NRV-P (- kg)									
030	040	050	063	075	090	110	130	150	
1	2	3,3	5,8	8,8	13	21	43,5	77	

	HA31+NMRV040 (- kg)	HA31+NMRV050 (- kg)
063	4,2	5,4
071	4,3	5,5
080	4,5	5,7

056/063/071/080				063/071/080/090			
NMRV-P063/HW030 (- kg)		NMRV-P075/HW030 (- kg)		NMRV-P090/HW040 (- kg)		NMRV-P110/HW040 (- kg)	
7,1		10		14,6		24,4	

NMRV-P090/IHW040 (- kg)	NMRV-P110/IHW040 (- kg)
14,6	38,4

NMRV+NMRV - NMRV+NMRV-P - NMRV-P+NMRV - NMRV-P+NMRV-P (- kg)													
025-030	025-040	030-040	030-050	030-063	040-050	040-063	040-075	040-090	050-090	050-110	063-110	063-130	063-150
1,9	3	3,5	4,7	7,4	5,8	8,5	11,3	15,3	16,5	38,5	41,2	54,2	90,2

NRV+NMRV - NRV+NMRV-P - NRV-P+NMRV - NRV-P+NMRV-P (- kg)												
030-040	030-050	030-063	040-050	040-063	040-075	040-090	050-090	050-110	063-110	063-130	063-150	
3,5	4,7	7,4	5,8	8,5	11,3	15,3	16,5	38,5	41,2	54,2	90,2	

The values reported in the tables are referred to the weight of the gearbox with lubricant included.
Weight without motor.

SW (- kg)						
030	040	050	063	075	090	105
1,2	2,3	3,5	6,2	9	13	21

ISW (- kg)						
030	040	050	063	075	090	105
1	2	3,3	5,8	8,8	13	21

	HA31+SW040 (- kg)	HA31+SW050 (- kg)	HA31+SW063 (- kg)	HA31+SW075 (- kg)	HA31+SW090 (- kg)
063	4,2	5,4	8,1	10,9	14,9
071	4,3	5,5	8,2	11,0	15,0
080	4,5	5,7	8,4	11,2	15,2

SW+SW (- kg)					
030-040	030-050	030-063	040-075	040-090	050-105
3,5	4,7	7,4	11,3	15,3	38,5

ISW+SW (- kg)					
030-040	030-050	030-063	040-075	040-090	050-105
3,5	4,7	7,4	11,3	15,3	38,5

ISW030

n_1 [rpm]	Mn_2 [Nm]	i	Pn_1 [kW]	n_2 [rpm]	Fr_1 [N]	Fr_2 [N]
500	24	40,00	0,06	13,0	210	1683
900	21	40,00	0,09	23,0	210	1383
1140	20	40,00	0,10	29,0	210	1278
1400	19	40,00	0,12	35,0	210	1194
1750	18	40,00	0,14	44,0	210	1108
2800	14	40,00	0,15	70,0	127	948

ISW040

n_1 [rpm]	Mn_2 [Nm]	i	Pn_1 [kW]	n_2 [rpm]	Fr_1 [N]	Fr_2 [N]
500	58	40,00	0,13	13,0	350	3238
900	50	40,00	0,19	23,0	350	2662
1140	48	40,00	0,22	29,0	350	2460
1400	45	40,00	0,25	35,0	350	2298
1750	43	40,00	0,30	44,0	350	2133
2800	31	40,00	0,31	70,0	350	1824

ISW050

n_1 [rpm]	Mn_2 [Nm]	i	Pn_1 [kW]	n_2 [rpm]	Fr_1 [N]	Fr_2 [N]
500	105	40,00	0,23	13,0	490	4445
900	88	40,00	0,32	23,0	490	3654
1140	85	40,00	0,38	29,0	490	3377
1400	82	40,00	0,44	35,0	490	3153
1750	78	40,00	0,52	44,0	490	2927
2800	59	40,00	0,58	70,0	490	2503

ISW063

n_1 [rpm]	Mn_2 [Nm]	i	Pn_1 [kW]	n_2 [rpm]	Fr_1 [N]	Fr_2 [N]
500	206	40,00	0,44	13,0	700	5810
900	171	40,00	0,61	23,0	700	4776
1140	160	40,00	0,69	29,0	700	4414
1400	149	40,00	0,77	35,0	700	4122
1750	142	40,00	0,91	44,0	700	3827
2800	113	40,00	1,09	70,0	700	3272

ISW075

n_1 [rpm]	Mn_2 [Nm]	i	Pn_1 [kW]	n_2 [rpm]	Fr_1 [N]	Fr_2 [N]
500	337	40,00	0,69	13,0	980	6858
900	277	40,00	0,95	23,0	980	5637
1140	262	40,00	1,11	29,0	980	5210
1400	245	40,00	1,23	35,0	980	4865
1750	229	40,00	1,42	44,0	980	4517
2800	182	40,00	1,71	70,0	980	3862

ISW090

n_1 [rpm]	Mn_2 [Nm]	i	Pn_1 [kW]	n_2 [rpm]	Fr_1 [N]	Fr_2 [N]
500	528	40,00	1,03	13,0	1270	7588
900	451	40,00	1,48	23,0	1270	6238
1140	423	40,00	1,70	29,0	1270	5765
1400	396	40,00	1,91	35,0	1270	5383
1750	376	40,00	2,24	44,0	1270	4998
2800	275	40,00	2,52	70,0	1270	4273

ISW105

n_1 [rpm]	Mn_2 [Nm]	i	Pn_1 [kW]	n_2 [rpm]	Fr_1 [N]	Fr_2 [N]
500	903	40,00	1,66	13,0	1270	9588
900	700	40,00	2,20	23,0	1270	7882
1140	660	40,00	2,54	29,0	1270	7285
1400	619	40,00	2,87	35,0	1270	6803
1750	588	40,00	3,37	44,0	1270	6315
2800	419	40,00	3,70	70,0	1270	5399

NRV030

n_1 [rpm]	Mn_2 [Nm]	i	Pn_1 [kW]	n_2 [rpm]	Fr_1 [N]	Fr_2 [N]
500	24	40,00	0,06	13,0	210	1683
900	21	40,00	0,09	23,0	210	1383
1140	20	40,00	0,10	29,0	210	1278
1400	19	40,00	0,12	35,0	210	1194
1750	18	40,00	0,14	44,0	210	1108
2800	14	40,00	0,15	70,0	127	948

NRV040

n_1 [rpm]	Mn_2 [Nm]	i	Pn_1 [kW]	n_2 [rpm]	Fr_1 [N]	Fr_2 [N]
500	58	40,00	0,13	13,0	350	3238
900	50	40,00	0,19	23,0	350	2662
1140	48	40,00	0,22	29,0	350	2460
1400	45	40,00	0,25	35,0	350	2298
1750	43	40,00	0,30	44,0	350	2133
2800	31	40,00	0,31	70,0	350	1824

NRV050

n_1 [rpm]	Mn_2 [Nm]	i	Pn_1 [kW]	n_2 [rpm]	Fr_1 [N]	Fr_2 [N]
500	105	40,00	0,23	13,0	490	4445
900	88	40,00	0,32	23,0	490	3654
1140	85	40,00	0,38	29,0	490	3377
1400	82	40,00	0,44	35,0	490	3153
1750	78	40,00	0,52	44,0	490	2927
2800	59	40,00	0,58	70,0	490	2503

NRV-P063

n_1 [rpm]	Mn_2 [Nm]	i	Pn_1 [kW]	n_2 [rpm]	Fr_1 [N]	Fr_2 [N]
500	206	40,00	0,44	13,0	700	5810
900	171	40,00	0,61	23,0	700	4776
1140	160	40,00	0,69	29,0	700	4414
1400	149	40,00	0,77	35,0	700	4122
1750	142	40,00	0,91	44,0	700	3827
2800	113	40,00	1,09	70,0	700	3272

NRV-P075

n_1 [rpm]	Mn_2 [Nm]	i	Pn_1 [kW]	n_2 [rpm]	Fr_1 [N]	Fr_2 [N]
500	337	40,00	0,69	13,0	980	6858
900	277	40,00	0,95	23,0	980	5637
1140	262	40,00	1,11	29,0	980	5210
1400	245	40,00	1,23	35,0	980	4865
1750	229	40,00	1,42	44,0	980	4517
2800	182	40,00	1,71	70,0	980	3862

NRV-P090

n_1 [rpm]	Mn_2 [Nm]	i	Pn_1 [kW]	n_2 [rpm]	Fr_1 [N]	Fr_2 [N]
500	528	40,00	1,03	13,0	1270	7588
900	451	40,00	1,48	23,0	1270	6238
1140	423	40,00	1,70	29,0	1270	5765
1400	396	40,00	1,91	35,0	1270	5383
1750	376	40,00	2,24	44,0	1270	4998
2800	275	40,00	2,52	70,0	1270	4273

NRV-P110

n_1 [rpm]	Mn_2 [Nm]	i	Pn_1 [kW]	n_2 [rpm]	Fr_1 [N]	Fr_2 [N]
500	932	40,00	1,72	13,0	1700	9588
900	794	40,00	2,49	23,0	1700	7882
1140	748	40,00	2,88	29,0	1700	7285
1400	702	40,00	3,26	35,0	1700	6803
1750	667	40,00	3,83	44,0	1700	6315
2800	529	40,00	4,67	70,0	1700	5399

NRV130

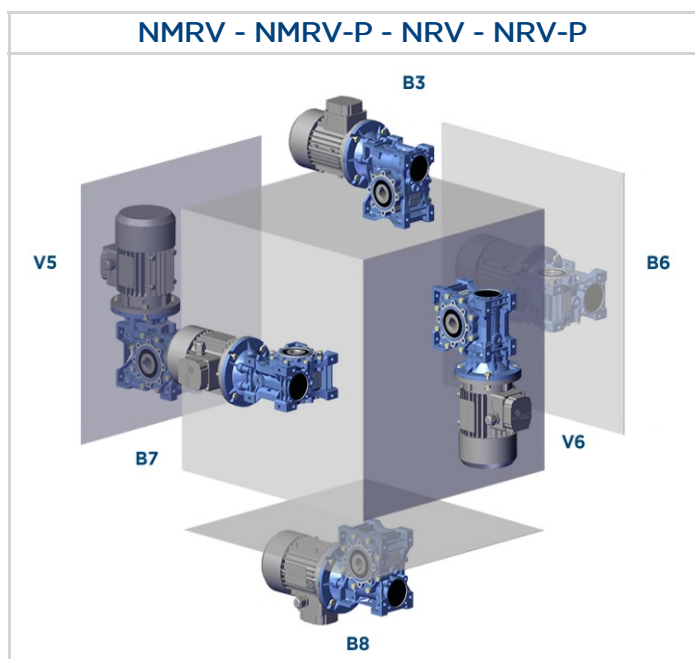
n_1 [rpm]	Mn_2 [Nm]	i	Pn_1 [kW]	n_2 [rpm]	Fr_1 [N]	Fr_2 [N]
500	1300	40,00	2,40	13,0	2100	12540
900	1100	40,00	3,41	23,0	2100	10309
1140	1075	40,00	4,22	29,0	2100	9528
1400	1050	40,00	4,87	35,0	2100	8897
1750	998	40,00	5,78	44,0	2100	8260
2800	730	40,00	6,45	70,0	2100	7062

NRV150

n_1 [rpm]	Mn_2 [Nm]	i	Pn_1 [kW]	n_2 [rpm]	Fr_1 [N]	Fr_2 [N]
500	2120	40,00	3,38	13,0	2800	17144
900	1800	40,00	5,58	23,0	2800	14094
1140	1800	40,00	7,07	29,0	2800	13026
1400	1550	40,00	7,19	35,0	2800	12163
1750	1473	40,00	8,54	44,0	2800	11292
2800	1200	40,00	10,47	70,0	2800	9654

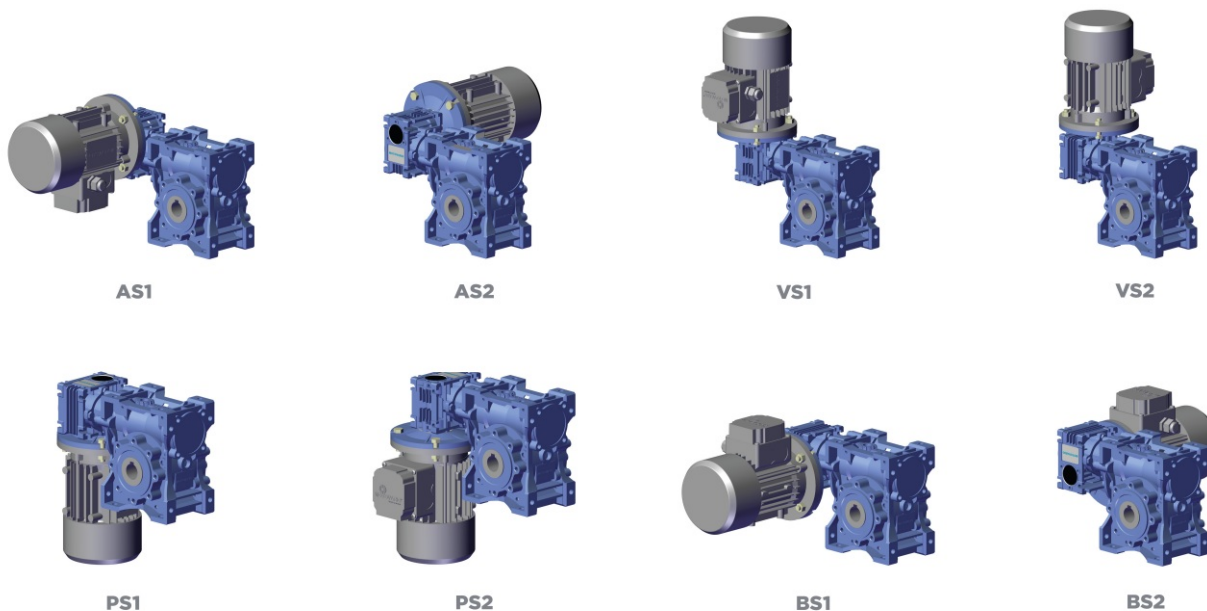
MOUNTING POSITIONS

The mounting position of the gear unit identifies its space orientation. B3 mounting position, as from a technical point of view, ensures lower oil splash, better lubrication and less heating.



Execution

NMRV/NMRV-P+NMRV/NMRV-P - NRV/NRV-P+NMRV/NMRV-P



LUBRICANT

- The gear reducers size 025 - 030 - 040 - 050 - 063 - 075 - 090 - 105 - 110 - 130 - 150 are supplied complete with lubricant for life, synthetic oil, LAND OIL GEAR SINT. They can be mounted in any position envisaged in the catalogue, except for NMRV-P/SW 090 - 110 and NRV-P/ISW 075-090-110 for which you must to specify the mounting position.
- For sizes 130 and 150 it is necessary to specify the position, otherwise the gear reducers are supplied with the quantity of oil relating to pos. B3.
- Only reduction units 130 and 150 are fitted with breather, level and oil drainage plugs.
- The pre-stage helical modules are supplied complete with life-long lubricant, synthetic oil, LAND OIL GEAR SINT. Lubrication is separated from that of the worm gear reducers.

It is recommended, after installation, to replace the closed plug used for transportation with the supplied breather plug.

Quantity of oil in litres ~

NMRV	025	030	040	050	130	150
B3	0,02	0,04	0,08	0,15	4,5	7
B8					3,3	5,1
B6-B7					3,5	5,4
V5					4,5	7
V6					3,3	5,1

NMRV-P	063	075	090	110
B3	0,33	0,55	1,15	1,6
B8				
B6-B7				
V5				
V6				

SW	030	040	050	063	075	090	105
B3	0,04	0,08	0,15	0,3	0,55	1	1,6
B8							
B6-B7							
V5							
V6							

HW	HW030		HW040	
	NMRV-P063	NMRV-P075	NMRV-P090	NMRV-P110
B3-B6-B7-B8-V5-V6	0,06	0,09	0,11	0,12

H	A31
B3-B5	0,07

NMRV	063	075	090	105	110
B3	0,3	0,55	1	1,6	3
B8					2,2
B6-B7					2,5
V5					3
V6					2,2

DIRECTION OF ROTATION

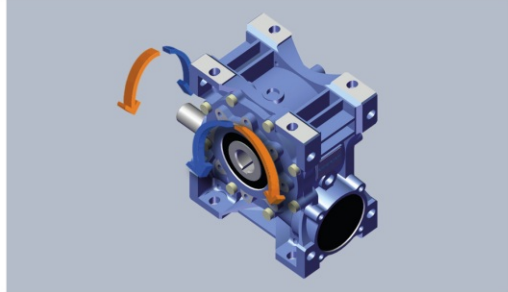
The worm screw rotation is right-handed.

DIRECTION OF ROTATION - HIGH SPEED SHAFT

NMRV - NRV - SW - ISW

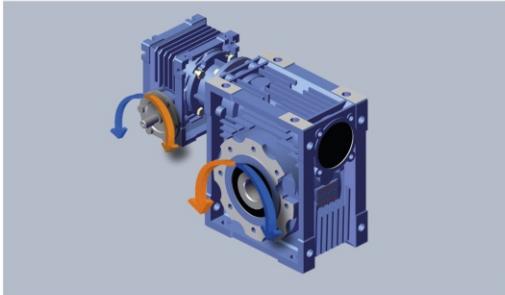


MOUNTING POSITION **B3**

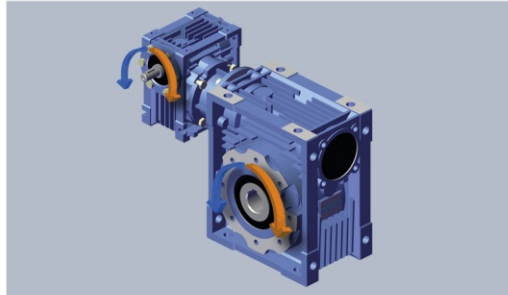


MOUNTING POSITION **B8**

NMRV + NMRV - SW + SW - NRV + NMRV - ISW + SW



MOUNTING POSITION **BS1**



MOUNTING POSITION **AS1**