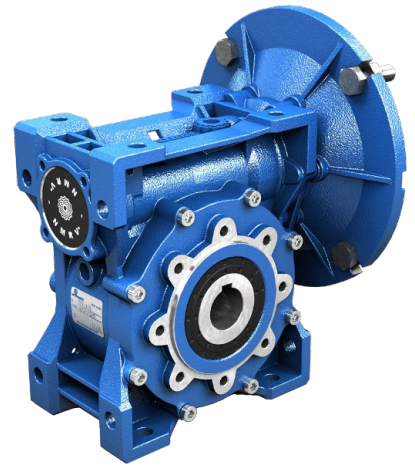


PRODUCT DATASHEET

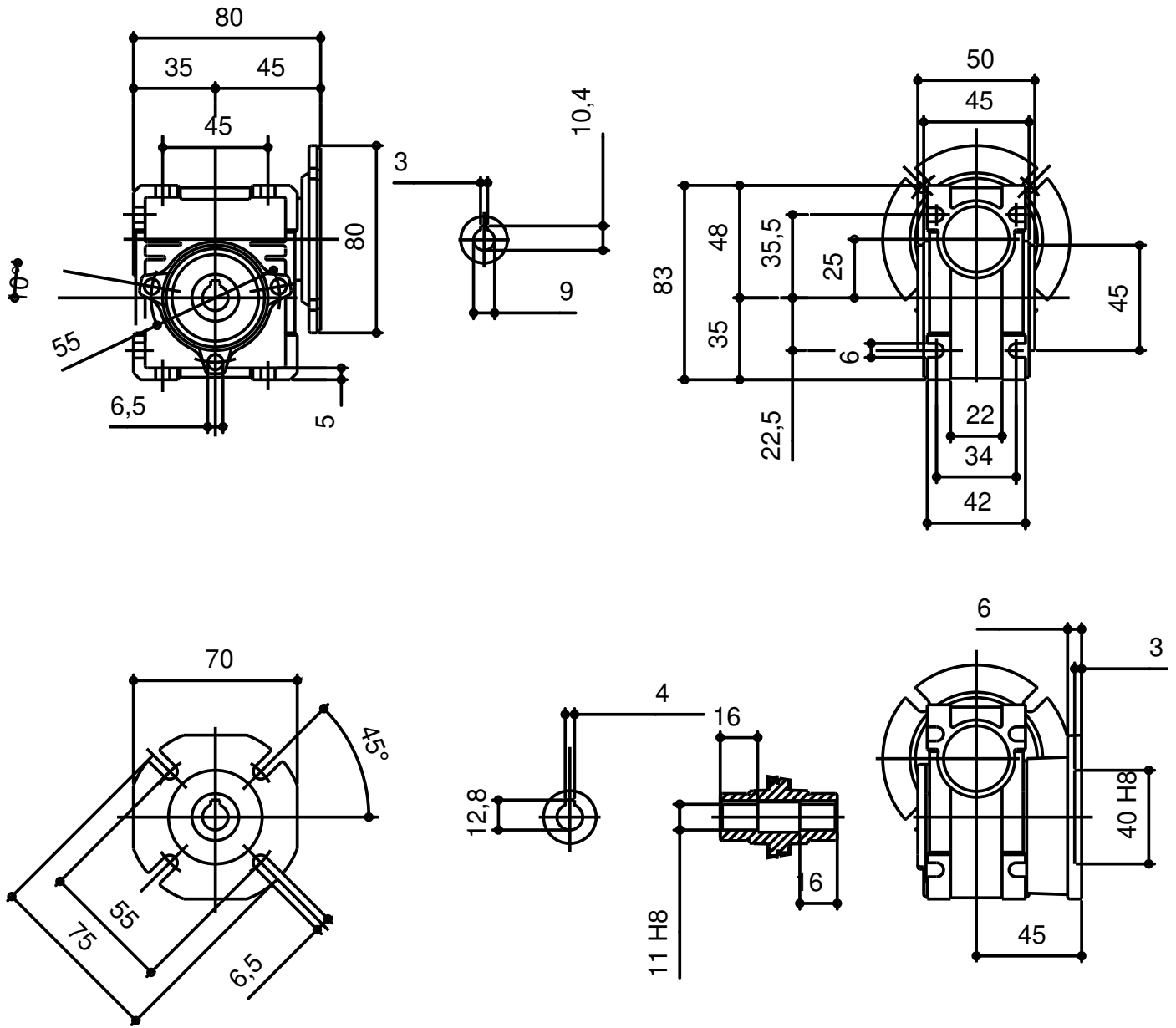


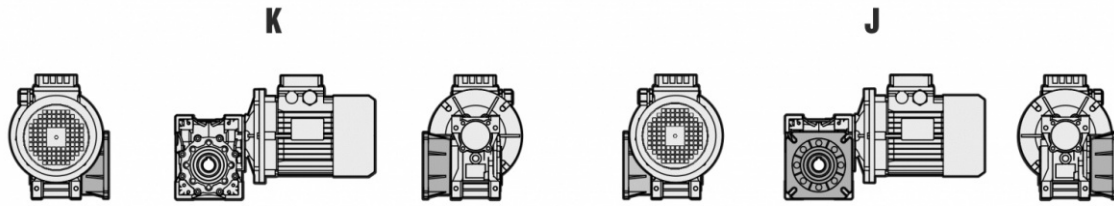
WORMGEARREDUCER

DATE 27.05.2026

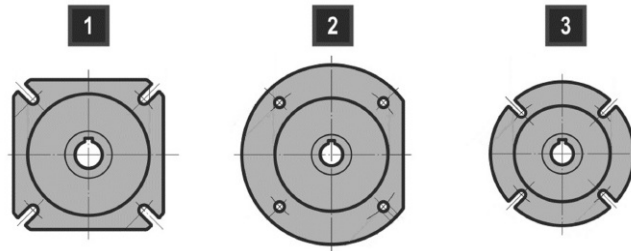
CHARACTERISTIC	VALUE
Regulations	No
Worm	PAM NMRV
Size	025
Ratio (i)	5,0
Input Dim.	Ø80x9 (IEC56 B14)
Hollow Output Shaft Dim.	Ø11
Double-Extended Worm Shaft	No
Mounting Position	U
VI-Output Oil Seal	NBR-Nitrile
VI-Input Oil Seal	ACM-Polyacrylate
VI-Output Bearings	Ball Bearings
VI-Lubrication	Synthetic ISO VG320
Paint	Not Painted

Values expressed in [mm]





Unless specified otherwise, the reduction unit is supplied with the flange in pos. J referred to position B3.



	NMRV - SW	NMRV - SW	NMRV - SW	NMRV-P - SW	NMRV-P - SW	NMRV-P - SW	SW	NMRV-P	NMRV	NMRV
	030	040	050	063	075	090	105	110	130	150
FA	1	1	1	1	1	1	1	1	1	1
FB	-	1	1	1	3	2	1	1	-	-
FC	-	2	2	2	-	3	-	-	-	-
FD	-	2	2	2	-	1	-	-	-	-
FE	-	-	-	3	-	-	-	-	-	-

DRAWINGS

PRODUCT DATASHEET

The values reported in the tables are referred to the weight of the gearbox with lubricant included.
Weight without motor.

NMRV - NMRV-P (- kg)									
025	030	040	050	063	075	090	110	130	150
0,7	1,2	2,3	3,5	6,2	9	13	21	43,5	84

NRV - NRV-P (- kg)									
030	040	050	063	075	090	110	130	150	
1	2	3,3	5,8	8,8	13	21	43,5	77	

	HA31+NMRV040 (- kg)	HA31+NMRV050 (- kg)
063	4,2	5,4
071	4,3	5,5
080	4,5	5,7

056/063/071/080				063/071/080/090			
NMRV-P063/HW030 (- kg)		NMRV-P075/HW030 (- kg)		NMRV-P090/HW040 (- kg)		NMRV-P110/HW040 (- kg)	
7,1		10		14,6		24,4	

NMRV-P090/IHW040 (- kg)	NMRV-P110/IHW040 (- kg)
14,6	38,4

NMRV+NMRV - NMRV+NMRV-P - NMRV-P+NMRV - NMRV-P+NMRV-P (- kg)													
025-030	025-040	030-040	030-050	030-063	040-050	040-063	040-075	040-090	050-090	050-110	063-110	063-130	063-150
1,9	3	3,5	4,7	7,4	5,8	8,5	11,3	15,3	16,5	38,5	41,2	54,2	90,2

NRV+NMRV - NRV+NMRV-P - NRV-P+NMRV - NRV-P+NMRV-P (- kg)												
030-040	030-050	030-063	040-050	040-063	040-075	040-090	050-090	050-110	063-110	063-130	063-150	
3,5	4,7	7,4	5,8	8,5	11,3	15,3	16,5	38,5	41,2	54,2	90,2	

The values reported in the tables are referred to the weight of the gearbox with lubricant included.
Weight without motor.

SW (- kg)						
030	040	050	063	075	090	105
1,2	2,3	3,5	6,2	9	13	21

ISW (- kg)						
030	040	050	063	075	090	105
1	2	3,3	5,8	8,8	13	21

	HA31+SW040 (- kg)	HA31+SW050 (- kg)	HA31+SW063 (- kg)	HA31+SW075 (- kg)	HA31+SW090 (- kg)
063	4,2	5,4	8,1	10,9	14,9
071	4,3	5,5	8,2	11,0	15,0
080	4,5	5,7	8,4	11,2	15,2

SW+SW (- kg)					
030-040	030-050	030-063	040-075	040-090	050-105
3,5	4,7	7,4	11,3	15,3	38,5

ISW+SW (- kg)					
030-040	030-050	030-063	040-075	040-090	050-105
3,5	4,7	7,4	11,3	15,3	38,5

ISW030

n_1 [rpm]	Mn_2 [Nm]	i	Pn_1 [kW]	n_2 [rpm]	Fr_1 [N]	Fr_2 [N]
500	25	5,00	0,31	100,0	210	841
900	21	5,00	0,47	180,0	175	692
1140	20	5,00	0,56	228,0	175	639
1400	19	5,00	0,64	280,0	150	597
1750	18	5,00	0,76	350,0	150	554
2800	12	5,00	0,79	560,0	115	474

ISW040

n_1 [rpm]	Mn_2 [Nm]	i	Pn_1 [kW]	n_2 [rpm]	Fr_1 [N]	Fr_2 [N]
500	52	5,00	0,63	100,0	350	1619
900	42	5,00	0,91	180,0	290	1331
1140	39	5,00	1,06	228,0	290	1230
1400	36	5,00	1,19	280,0	250	1149
1750	34	5,00	1,41	350,0	250	1066
2800	24	5,00	1,56	560,0	200	912

ISW050

n_1 [rpm]	Mn_2 [Nm]	i	Pn_1 [kW]	n_2 [rpm]	Fr_1 [N]	Fr_2 [N]
500	101	5,00	1,23	100,0	490	2222
900	82	5,00	1,76	180,0	400	1827
1140	75	5,00	2,01	228,0	400	1689
1400	68	5,00	2,24	280,0	350	1577
1750	65	5,00	2,66	350,0	350	1464
2800	45	5,00	2,90	560,0	280	1251

NRV030

n_1 [rpm]	Mn_2 [Nm]	i	Pn_1 [kW]	n_2 [rpm]	Fr_1 [N]	Fr_2 [N]
500	25	5,00	0,31	100,0	210	841
900	21	5,00	0,47	180,0	175	692
1140	20	5,00	0,56	228,0	175	639
1400	19	5,00	0,64	280,0	150	597
1750	18	5,00	0,76	350,0	150	554
2800	12	5,00	0,79	560,0	115	474

NRV040

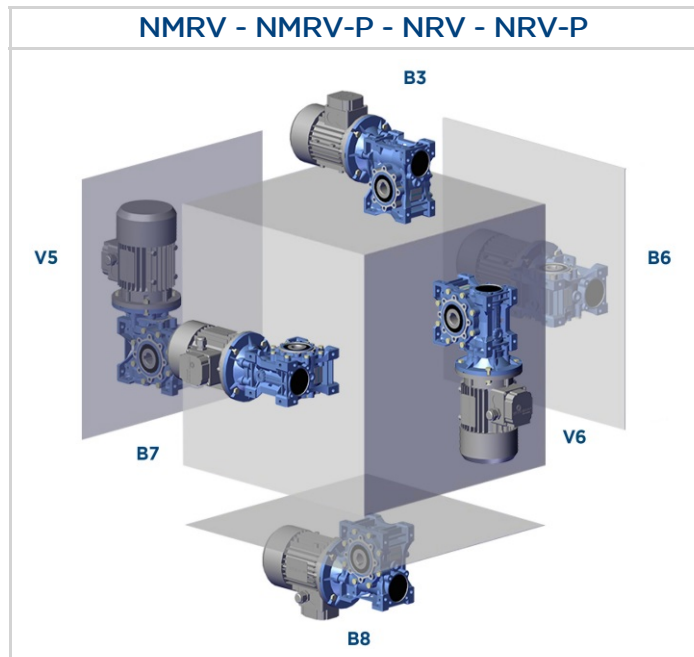
n_1 [rpm]	Mn_2 [Nm]	i	Pn_1 [kW]	n_2 [rpm]	Fr_1 [N]	Fr_2 [N]
500	52	5,00	0,63	100,0	350	1619
900	42	5,00	0,91	180,0	290	1331
1140	39	5,00	1,06	228,0	290	1230
1400	36	5,00	1,19	280,0	250	1149
1750	34	5,00	1,41	350,0	250	1066
2800	24	5,00	1,56	560,0	200	912

NRV050

n_1 [rpm]	Mn_2 [Nm]	i	Pn_1 [kW]	n_2 [rpm]	Fr_1 [N]	Fr_2 [N]
500	101	5,00	1,23	100,0	490	2222
900	82	5,00	1,76	180,0	400	1827
1140	75	5,00	2,01	228,0	400	1689
1400	68	5,00	2,24	280,0	350	1577
1750	65	5,00	2,66	350,0	350	1464
2800	45	5,00	2,90	560,0	280	1251

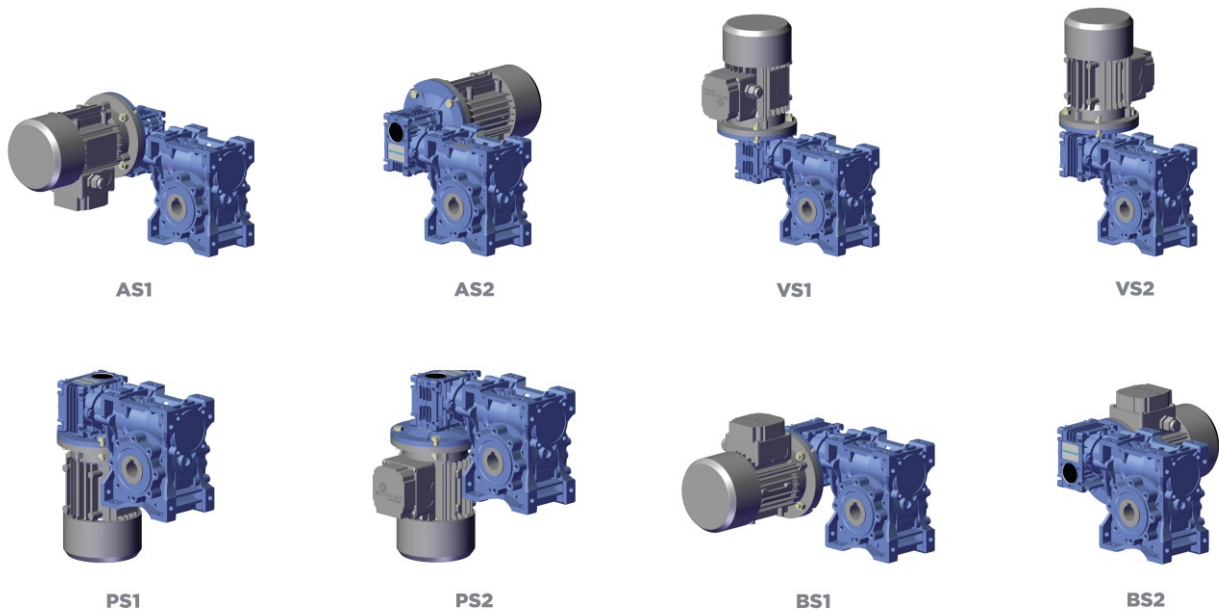
MOUNTING POSITIONS

The mounting position of the gear unit identifies its space orientation. B3 mounting position, as from a technical point of view, ensures lower oil splash, better lubrication and less heating.



Execution

NMRV/NMRV-P+NMRV/NMRV-P - NRV/NRV-P+NMRV/NMRV-P



LUBRICANT

- The gear reducers size 025 - 030 - 040 - 050 - 063 - 075 - 090 - 105 - 110 - 130 - 150 are supplied complete with lubricant for life, synthetic oil, LAND OIL GEAR SINT. They can be mounted in any position envisaged in the catalogue, except for NMRV-P/SW 090 - 110 and NRV-P/ISW 075-090-110 for which you must to specify the mounting position.
- For sizes 130 and 150 it is necessary to specify the position, otherwise the gear reducers are supplied with the quantity of oil relating to pos. B3.
- Only reduction units 130 and 150 are fitted with breather, level and oil drainage plugs.
- The pre-stage helical modules are supplied complete with life-long lubricant, synthetic oil, LAND OIL GEAR SINT. Lubrication is separated from that of the worm gear reducers.

It is recommended, after installation, to replace the closed plug used for transportation with the supplied breather plug.

Quantity of oil in litres ~

NMRV	025	030	040	050	130	150
B3	0,02	0,04	0,08	0,15	4,5	7
B8					3,3	5,1
B6-B7					3,5	5,4
V5					4,5	7
V6					3,3	5,1

NMRV-P	063	075	090	110
B3	0,33	0,55	1,15	1,6
B8				
B6-B7				
V5				
V6				

SW	030	040	050	063	075	090	105
B3	0,04	0,08	0,15	0,3	0,55	1	1,6
B8							
B6-B7							
V5							
V6							

HW	HW030		HW040	
	NMRV-P063	NMRV-P075	NMRV-P090	NMRV-P110
B3-B6-B7-B8-V5-V6	0,06	0,09	0,11	0,12

H	A31
B3-B5	0,07

NMRV	063	075	090	105	110
B3	0,3	0,55	1	1,6	3
B8					2,2
B6-B7					2,5
V5					3
V6					2,2

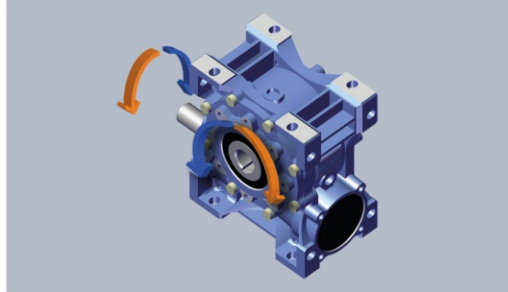
The worm screw rotation is right-handed.

DIRECTION OF ROTATION - HIGH SPEED SHAFT

NMRV - NRV - SW - ISW

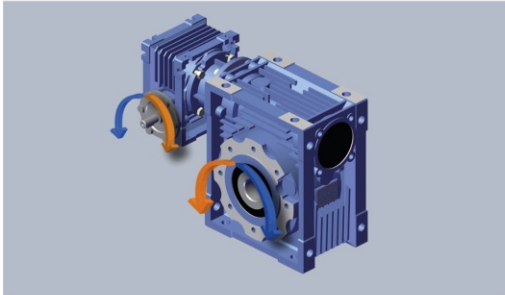


MOUNTING POSITION **B3**

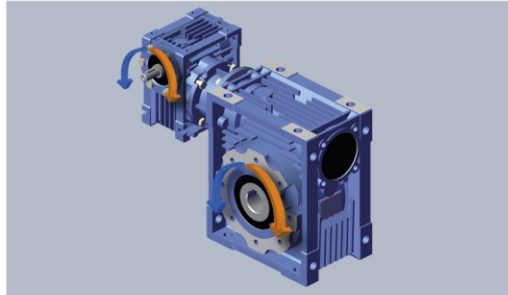


MOUNTING POSITION **B8**

NMRV + NMRV - SW + SW - NRV + NMRV - ISW + SW



MOUNTING POSITION **BS1**



MOUNTING POSITION **AS1**